

# BRECO® PinLock

Precise. Secure. Easy to assemble.

## BRECO® PinLock:

- A maximum-precision timing belt connection
- High level of flexibility and running smoothness
- A highly precise and ultra-straight bore path for connection pins
- Option to be assembled/ disassembled several times
- Simple on-site assembly

## BRECO® PinLock

The BRECO® PinLock is a simple and fast-assembly timing belt connection that demonstrates high-quality workmanship and outstanding running properties even at first glance. The optimised finger shape ensures equal load distribution in every cross section, thereby allowing for a high load-bearing capacity of the connection. The precise water-jet-cut finger contours guarantee both ends of the belt can be easily joined during on-site assembly and ensure quiet, conformal running.

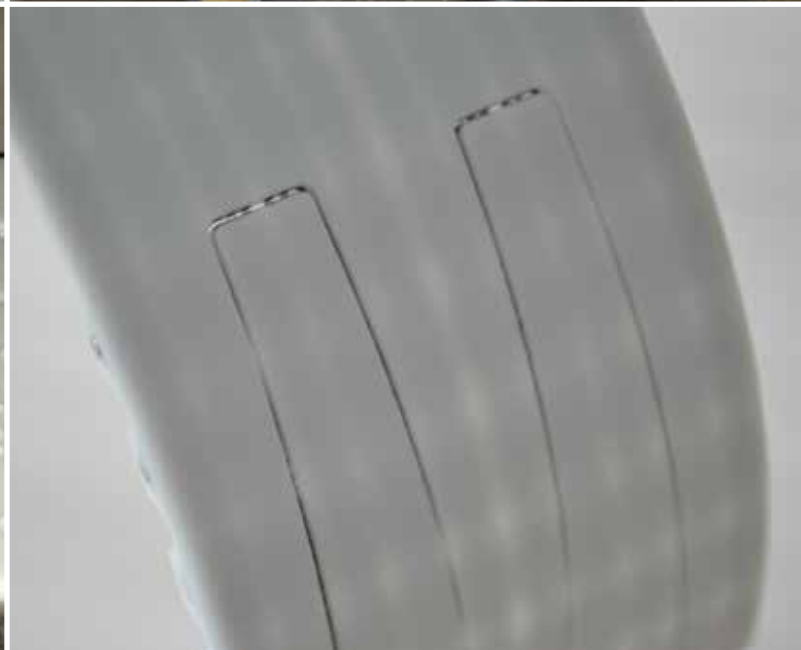
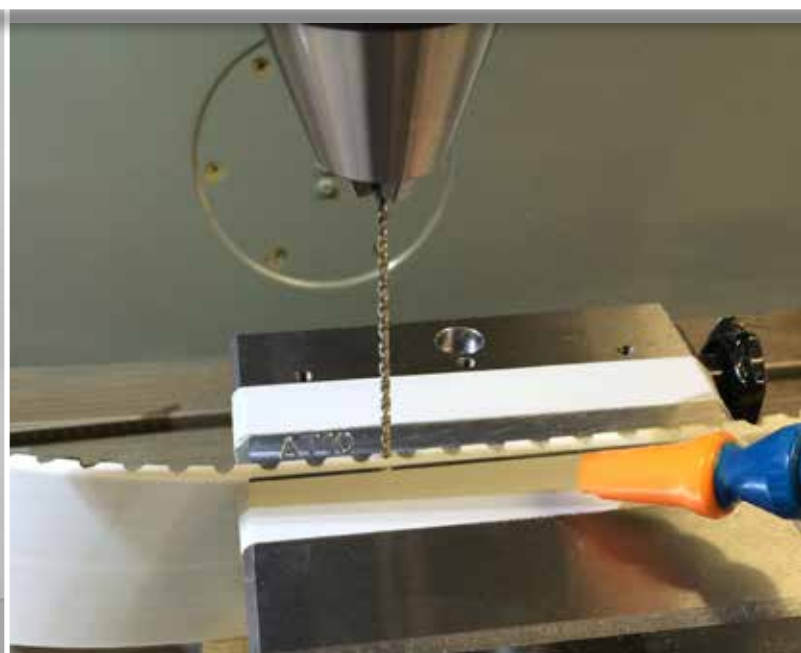
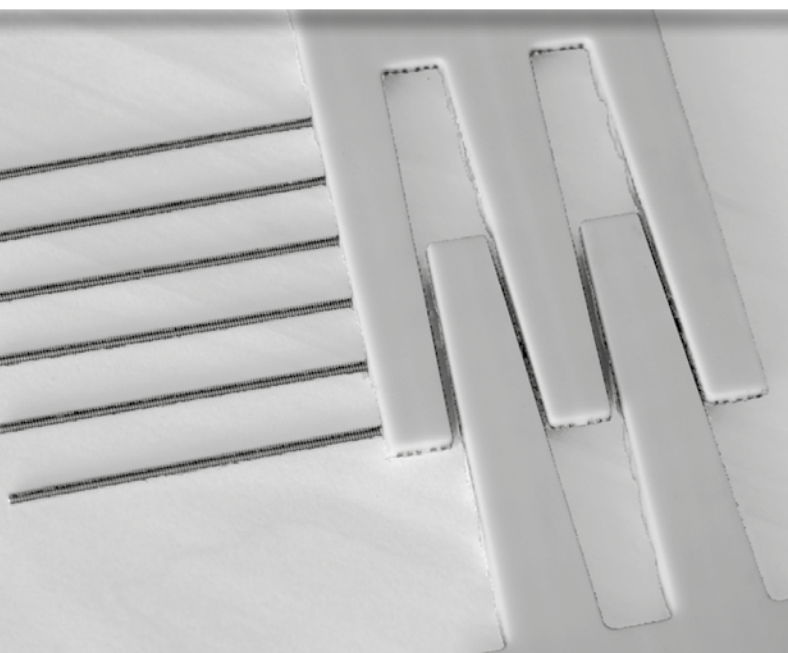
The CNC-milled bore paths are ultra-straight and the rust-proof threaded pins are tightened using a cordless screwdriver, which makes assembly extremely simple. The BRECO® PinLock is a secure timing belt connection that can be used several times and is also suitable for coated timing belts and timing belts with welded-on profiles.



BRECO is a member of Mulco Europe EWIV



# BRECO® PinLock – Precise. Secure. Easy to assemble.



## BRECO® PinLock

### Available belt types and widths / permissible tensile forces

Belt width	[mm]	25	32	50	75	96	100
AT10 / T10 / T1/2"	[N]	300	400	600	900	1200	1200
AT20 / T20	[N]	500	600	900	1400	-	1800

The BRECO distribution partner responsible for you will be happy to provide further information.